

CLIFTON

Circa 1830

316 Waterfront Acres on Leesville Lake



MIKE WILLIAMS, REALTOR®

Offering the Finest Views of Virginia's Landscapes



CLIFTON



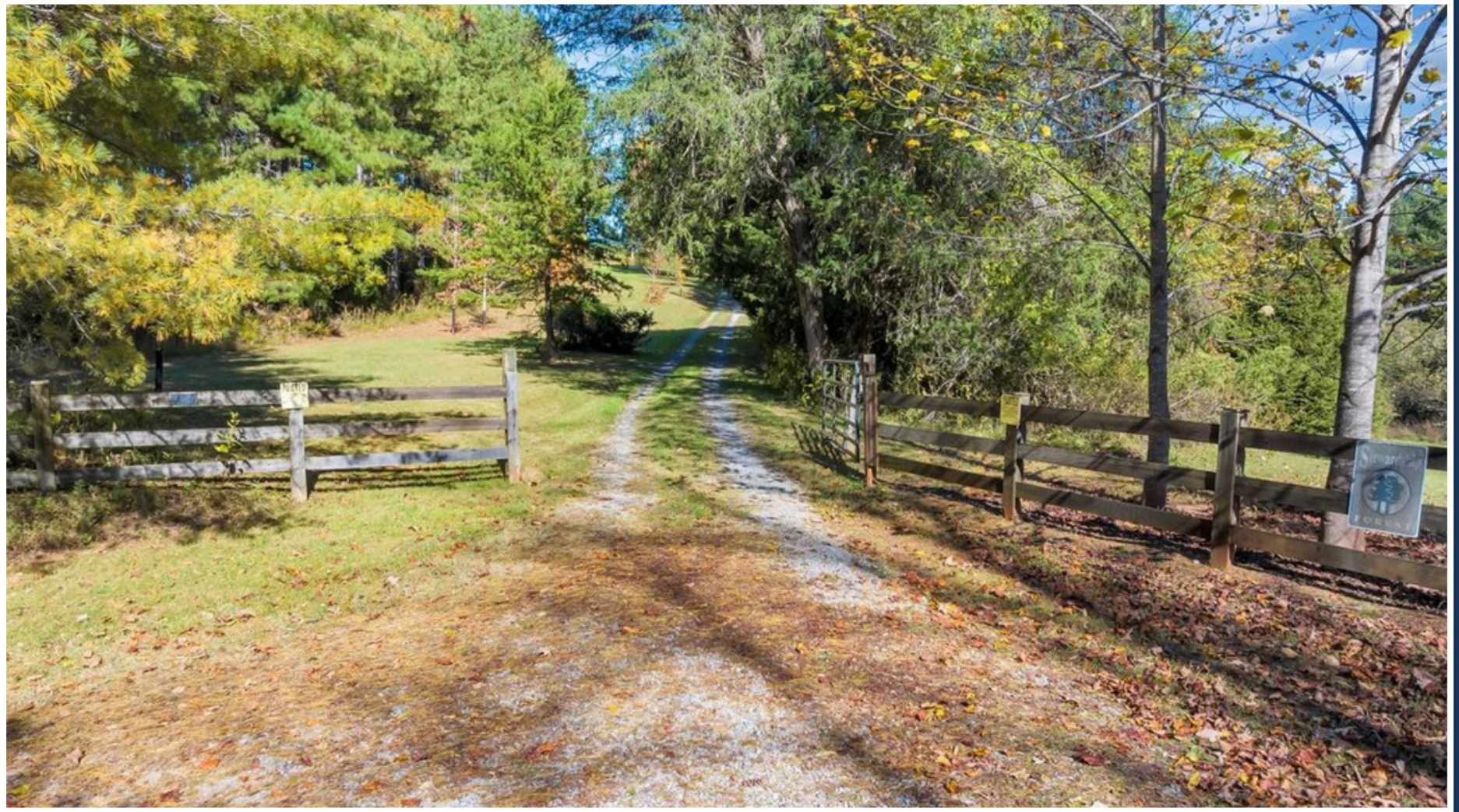
4,500 Feet of waterfront on Leesville Lake
and a 1 acre pond

CLIFTON



Just 10 miles to Smith Mountain Lake Airport

CLIFTON



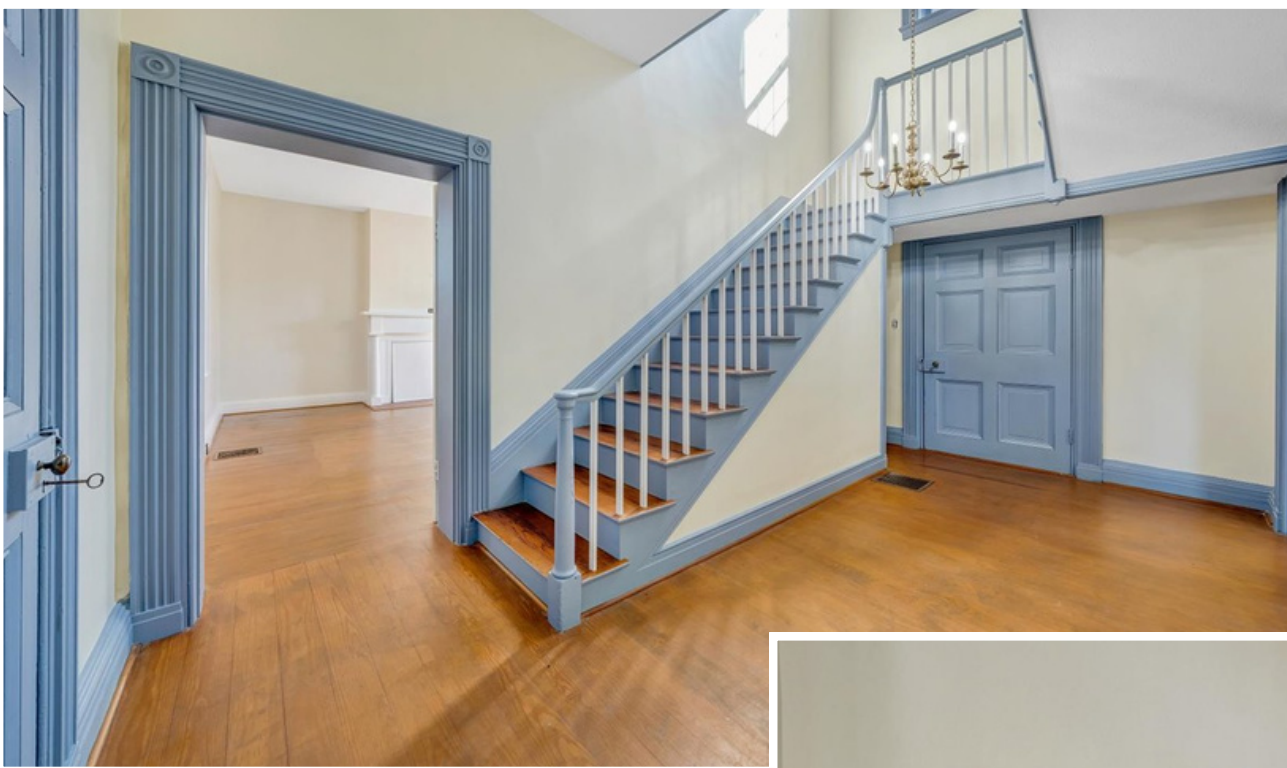
Gated Entry on Paved Road

CLIFTON



Beautiful Entry Drive

CLIFTON

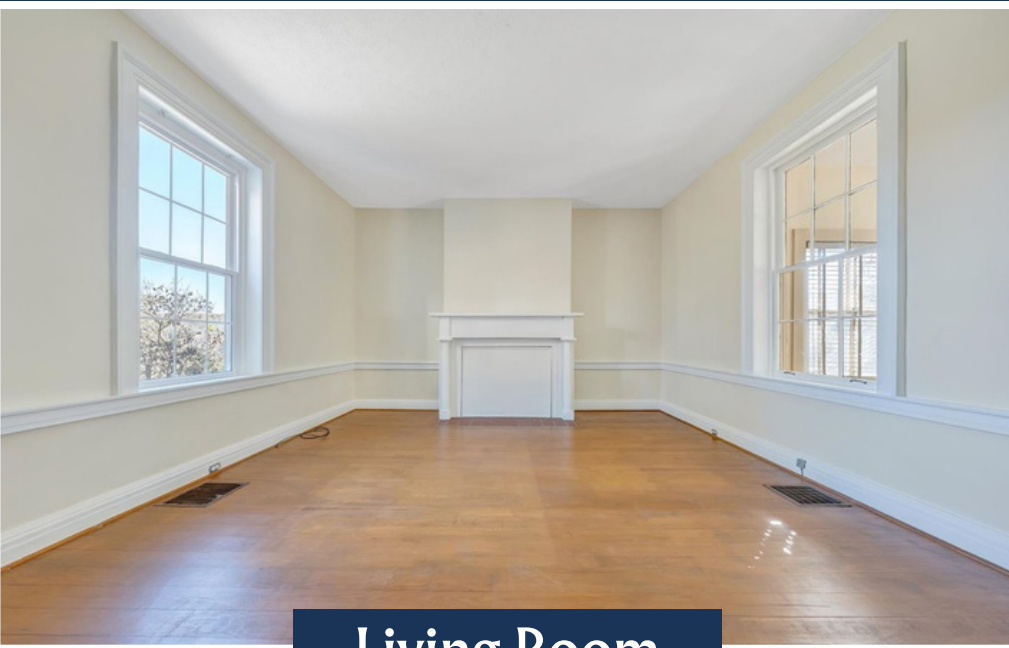


There are 2 large
formal entry foyers

These photos show the
main and upper levels of
ENTRY FOYER # 1



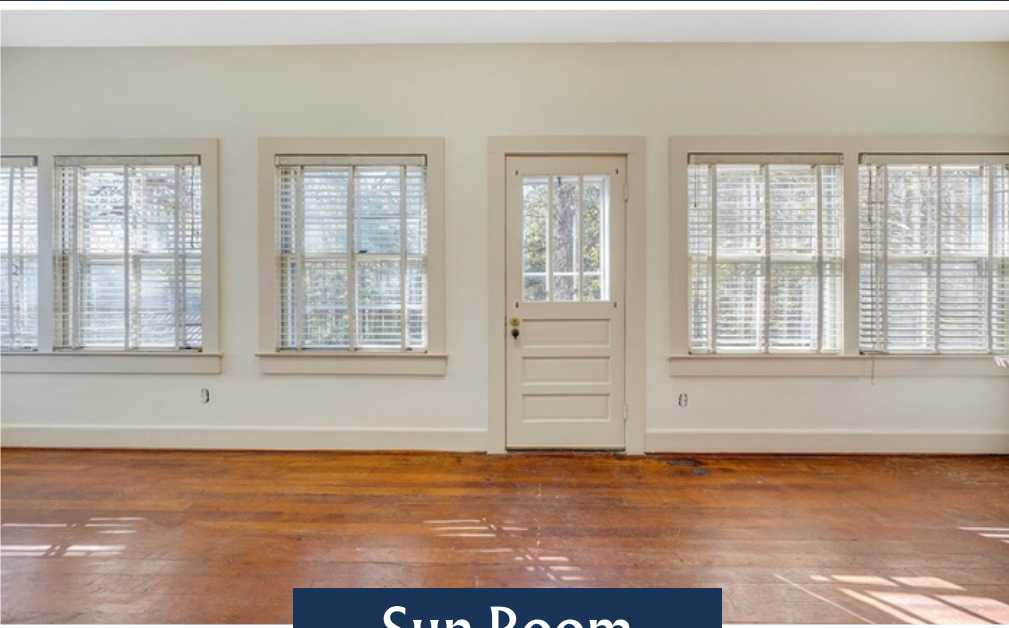
CLIFTON



Living Room



Dining Room



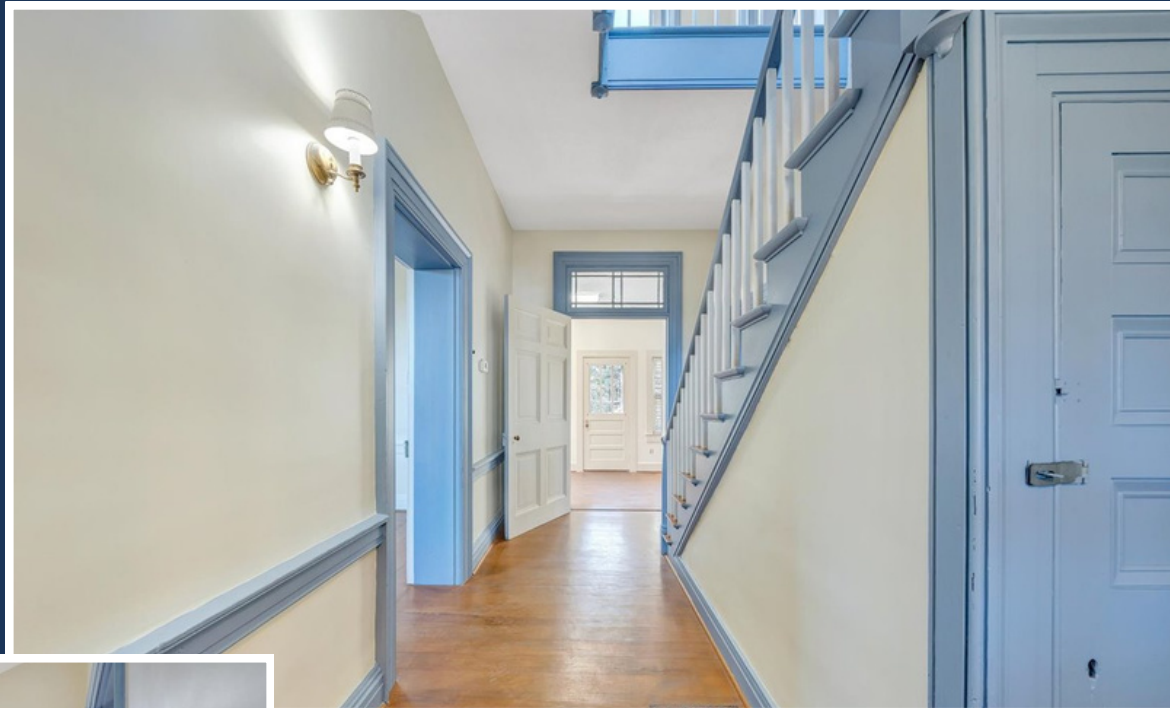
Sun Room



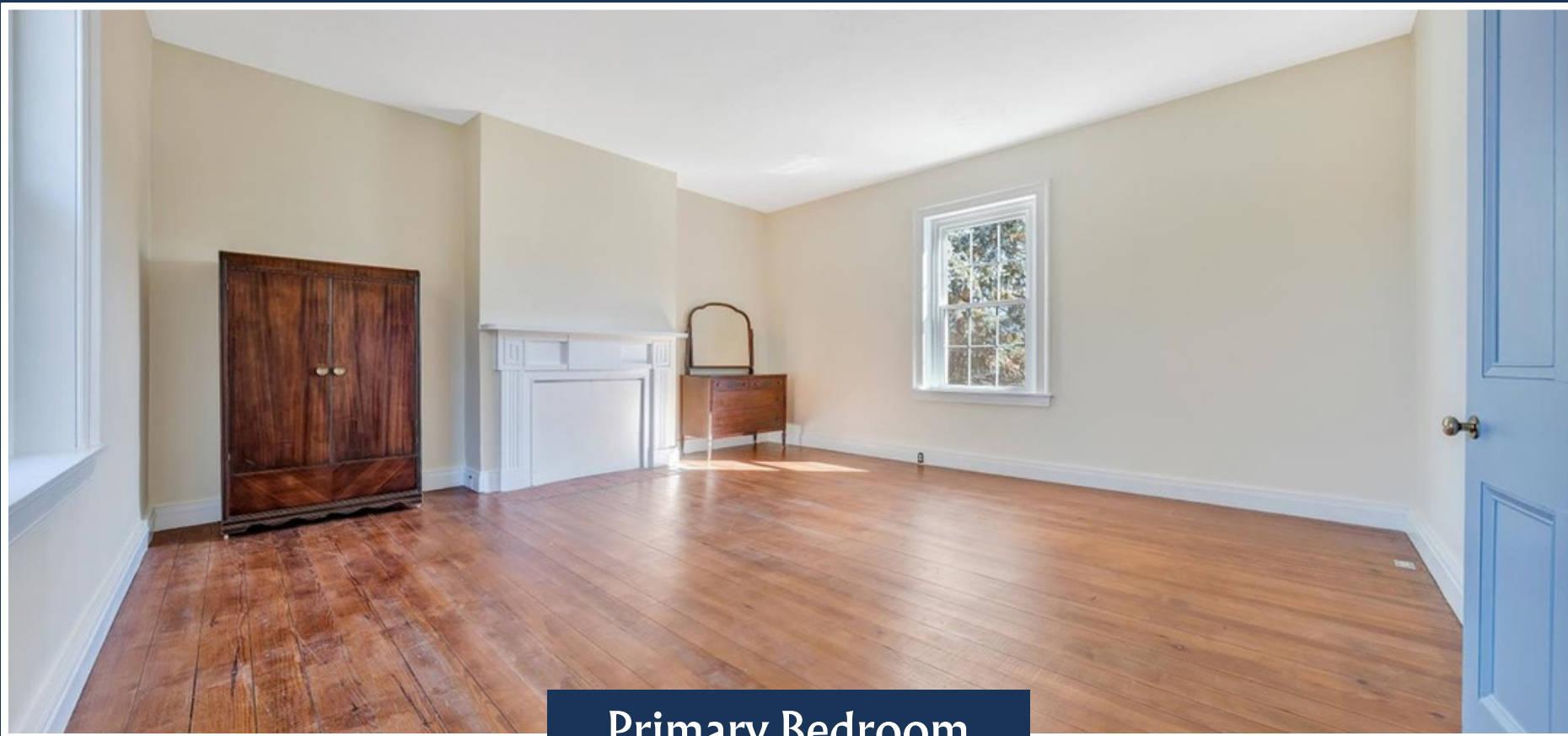
Kitchen

CLIFTON

There are 2 large
formal entry foyers



These photos show the
main and upper levels of
ENTRY FOYER # 2



Primary Bedroom

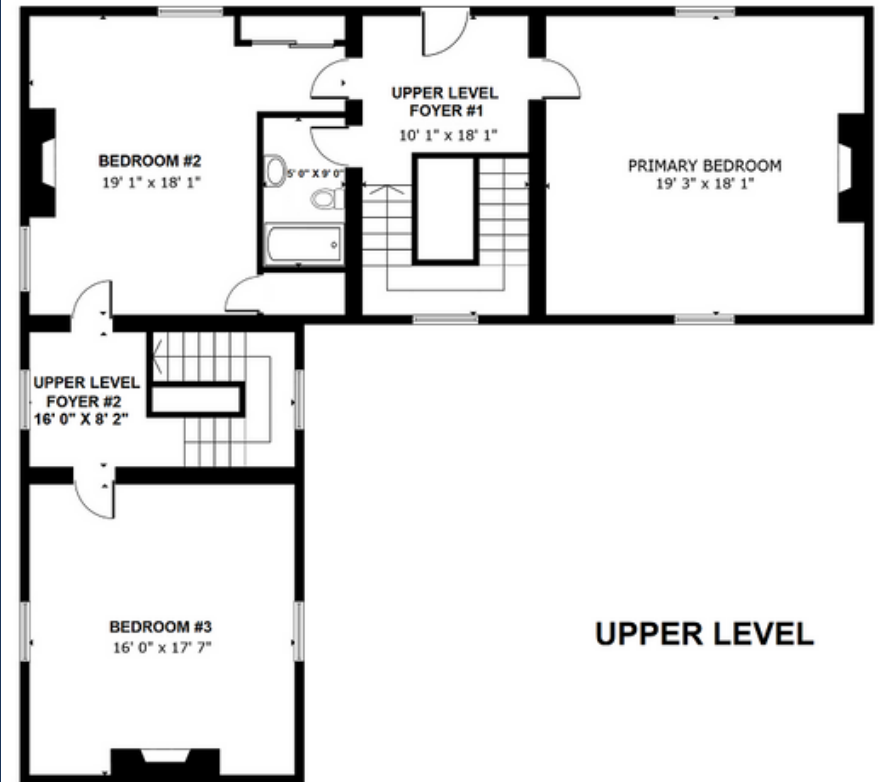
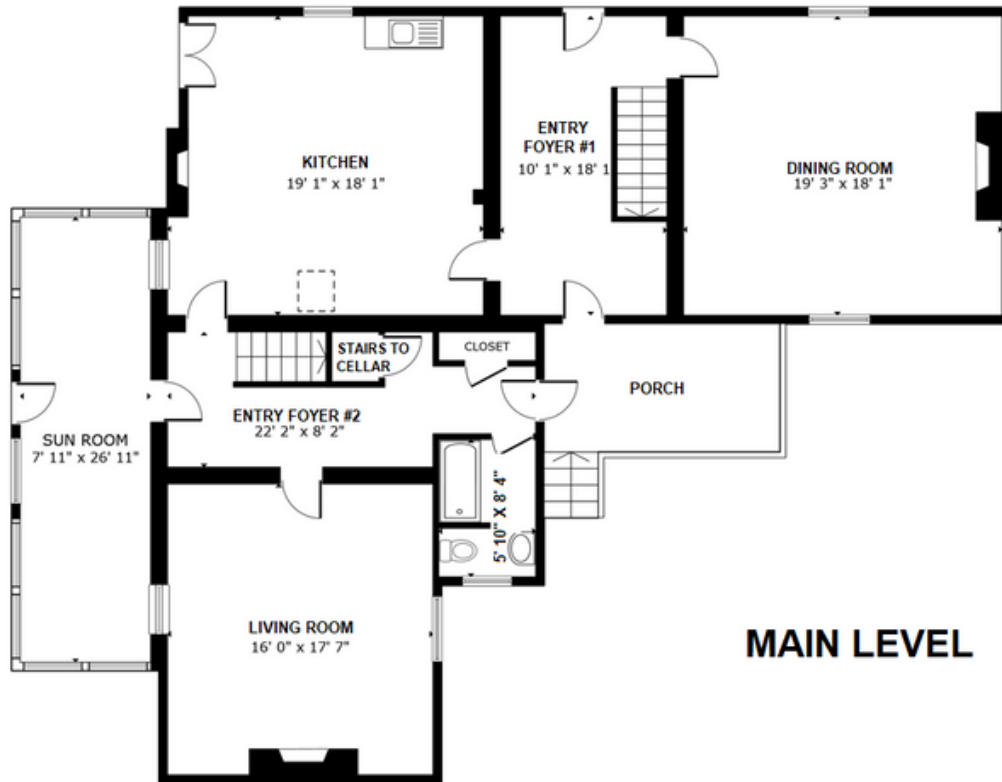


Bedroom 2



Bedroom 3

CLIFTON



Main Level
Upper Level
Cellar
Total

1,852 sf
1,580 sf
1,096 sf
4,528 sf

CLIFTON

Circa 1830

9556 Tolars Ferry Road, Pittsville, VA 24139

\$2,700,000



- 316 Acres on Leesville Lake with 4,500 of waterfront and a 1 acre pond
- Flemish bond brick colonial with 2 formal entry foyers and 2 staircases
- 6 Wood-burning fireplaces in the living room, dining room, kitchen, and each of the 3 bedrooms
- Summer Kitchen
- 10 ft 4 ceilings and 12 in thick masonry walls finished in plaster, freshly painted
- Heart pine and hemlock floors
- 3 Bedrooms / 2 Full Baths
- Bedford County, Virginia. Just minutes to neighboring Smith Mountain Lake



MIKE WILLIAMS, REALTOR®
540-525-2939

ML REALTY

Moneta, VA



Offering the Finest Views of Virginia's Landscapes

