

RAY  
**MOORHOUSE**  
GROUP

**COMPASS**



Presenting  
**207 Main Street, Riverton**



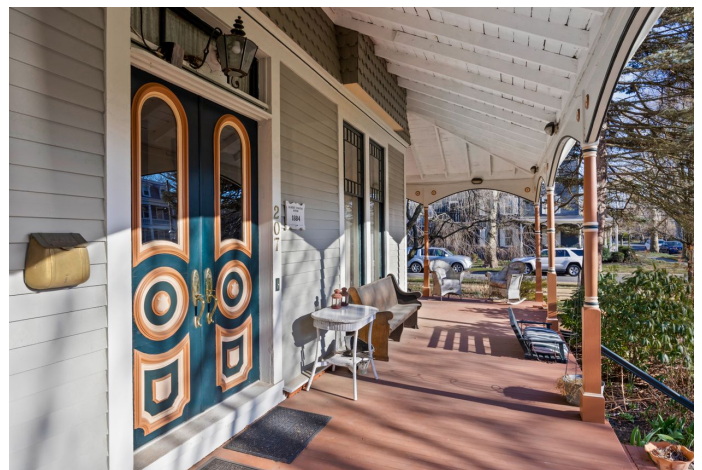
# Albert Foster House, 1884

## Queen Anne Victorian Home

---

6 Bedrooms 4 Baths In-law Suite

Own a piece of Riverton history... this incredible Queen Anne Victorian is truly a magnificent work of art. Lovingly maintained and preserved throughout the years by those who appreciate the fine detail, accents, and history this home offers. Welcome guests to the Mahogany wood wrap-around Porch while you enjoy the annual Riverton 4th of July Parade, or perhaps cap your day off there after an afternoon of sailing at the Yacht Club, which is only two blocks away. The interior features many notable features throughout the 3 stories of living, which include 6 bedrooms, 4 full baths, full basement, and In-law suite addition. You'll notice all of the custom finishes throughout the home from the stunning original stained glass panels at the wood-carved stairway to the impressive fireplace that is an absolute showpiece. Enjoy your tour!





# Notable Features

- // Wrap-around Porch with Mahogany Flooring
- // Front Exterior Boasts Custom-made Posts, Wooden Arches and Hand-carved Rosettes
- // Double Door Entry with Transom Window
- // Large Center Hall leads to Majestic Oak Staircase with Heavily Carved Newel Post
- // Original Stained Glass Windows, which go from the First to the Third Floor
- // Original Alcove Seat in Stair Nook with Built-in Display (once used as the home telephone sitting station)
- // Pocket Doors in Living & Dining Rooms
- // Gas Fireplace with Marble Hearth & Custom Mantle in Living Room
- // Intricate Woodwork highlights the Bay Window in the Living Room
- // Butler's Pantry off the Kitchen with Floor to Ceiling Hutch
- // Newer Flooring throughout Kitchen, Butler's Pantry and Hall
- // Transom Slider in Kitchen to Side Deck
- // W. H. Harrison & Bro. Original Coal Stove
- // Updated Quartz Countertops in Kitchen
- // Dining Room Window Seating and Corner China Cabinet
- // Antique Lighting Fixtures
- // Dentil Crown Molding
- // Newer Windows in Most of Second Floor and All of Third Floor

## In-Law Suite:

- // Addition added to the Rear of the House above the Garage that is Consistent with the Historic Detail of the Original Home
- // Covered Private Side Entrance
- // Kitchenette with Refrigerator and Stove
- // Great Room with Cathedral Ceiling, Sky Lights, and Balcony
- // Spiral Staircase to Loft
- // Bedroom with Walk-in Closet
- // En-Suite Bathroom with Walk-in Shower
- // Updated Air Conditioning and Heat



## Key Details

- Taxes: \$14,376 / year
- Year Built: 1884
- Lot Size: 0.37 AC / 16,000 SF
- Corner Lot
- Private Fenced-In Yard
- Full Basement
- Pull-down Attic
- 2- Car Attached Garage
- Oversized Driveway
- Large Circular Walkway
- Deck and 2 Patios





Located just 2 blocks from the Delaware River



## Ray and Ashley Moorhouse

Broker Associate | Sales Associate

### Father Daughter Real Estate Team

M: 856.296.0363

O: 856.214.2639

E: [ray@raymoorhouse.com](mailto:ray@raymoorhouse.com)

W: [raymoorhouse.com](http://raymoorhouse.com)

RAY

**MOORHOUSE**

GROUP



Compass RE is a licensed real estate broker. All material is intended for informational purposes only and is compiled from sources deemed reliable but is subject to errors, omissions, changes in price, condition, sale, or withdrawal without notice. No statement is made as to the accuracy of any description or measurements (including square footage). This is not intended to solicit property already listed. No financial or legal advice provided. Equal Housing Opportunity. Photos may be virtually staged or digitally enhanced and may not reflect actual property conditions.