



## “Grange”, St. Croix

Greathouse, Overseer House, Village, Ruins, 26 Acres

The original owners of this historic property were recorded in 1738 as James and Ann Lytton. Ann was sister to Rachel, Alexander Hamilton’s mother. Rachel was married to John Lavien at Grange in 1745, returned to Nevis about 1750, then returned to St. Croix in 1765. In 1768, Rachel was buried in the Lytton family cemetery at Grange. However, because the Lyttons sold Grange in 1764, it is unlikely that Alexander actually lived at Grange. He would later build his own “Grange” in New York City.

Thus began the history of Estate Grange, which for the past 275 or so years, has been many faceted and richly representative of the history of the island and its inhabitants.

The property currently consists of a greathouse, embellished over the years since 1739, another structure, which may have been an overseer’s house as well as an infirmary or carriage house, a detached garage, four small village homes, various plantation ruins, and one fine new well. Lignum vitae and mahogany trees line the driveway; evidence of cobblestone roads, old stone walls and steps, lead one to imagine life in the 1700s. A memorial dedicated to Danish soldiers who succumbed to a yellow fever epidemic in 1886, a Dutch cast iron bell dating to 1767, and a monument dedicated to the memory of Rachel Faucette Lavien, buried at Grange in 1768, are treasured markers of historical interest.

The greathouse has large oversized living and dining rooms with beautiful crown molding, two large upstairs bedrooms and one large lower level bedroom, a den, four full baths, 1970s era kitchen and butler’s pantry. The lower level has stone walls several feet thick. The ground level entry foyer includes a grand staircase of tiled steps to the living and dining rooms. Beautiful mahogany doors enclose a large recessed china closet in the dining room. The greathouse is currently furnished with various period pieces, including the antique mahogany dining furniture purchased from the Danish Government House in St. Thomas in the 1920s. (Furniture is to be sold separately.) There is a lovely garden patio with old concrete tiles and wide staircase leading to surrounding tiers of diverse gardens.

The property has an old world ambience created by its large old mahogany trees, stone walls, roadways, elegant Neoclassic greathouse and generously spacious private grounds.

*For further information, please contact Rebecca Merwin, Trustee, M.K. Armstrong Trust, 340-514-1001.*



Grange Great House ca. 1880 by Frederik M. Visby.

Royal Library of Denmark

#### Estate Grange Owners and Renters 1738-Present

=====

#### Time Period

#### Owner/Renter

1738-1764	James Lytton Sr.
1764-1767	John Denn
1767-1770	Nicholas Tuite
1770-1796	Robert Tuite
1796-1802	Henry Seaton
1802-1811	Robert Tuite
1811-1819	Robert Tuite heirs
1819-1835	Count Charles McCarthy
1835-1870	State Treasury (King of Denmark 1835-1848)
	Andrew Barclay leasing 1835-1847
	William F. Bentzon leasing 1847-1853
	Julia T. H. Bentzon leasing 1853-1860
	H. L. Arnesen leasing 1860-1862
	Moses & S. G Melchoir leasing 1862-1870
1870-1881	Victor C. Hvid & Holgar Riis
1881-1906	State Treasury
	Botanical Station 1892-1906
1906-1922	St. Croix Sugar Factory
1922-1928	St. Croix Sugar Factory Inc.
1928-1965	Douglas, Robert & Malcolm Armstrong
1965-1969	Malcolm Armstrong
1969-Present	The M. K. Armstrong Trust

# Estate Grange Greathouse



The formal dining room and entry hall.

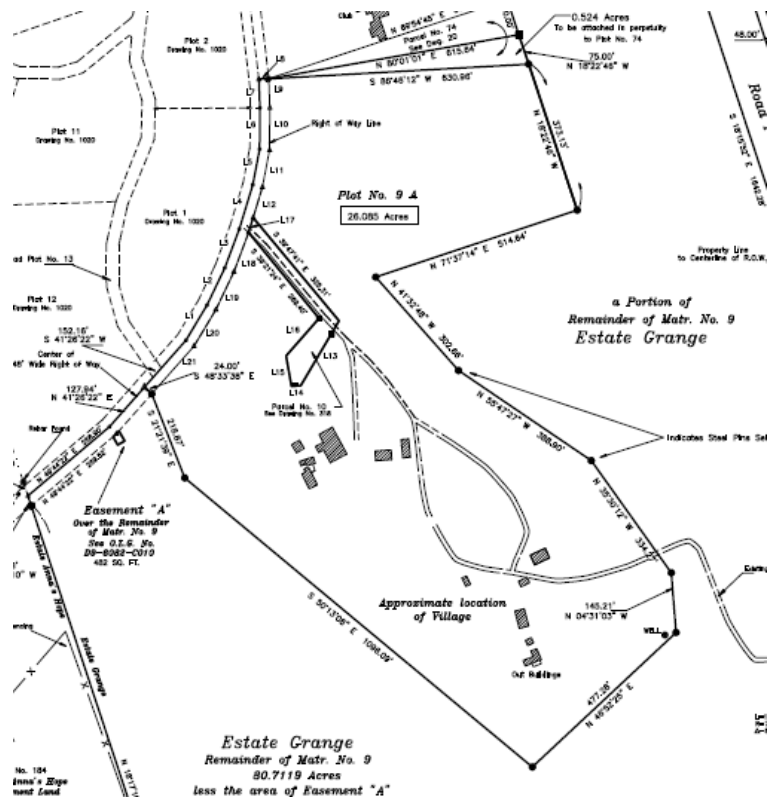
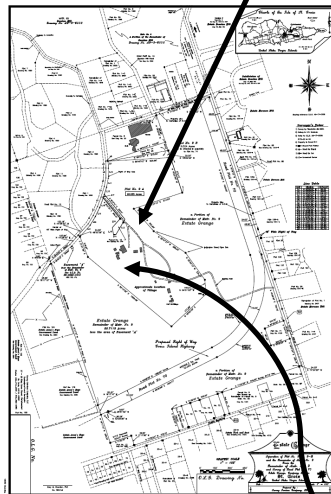


## Estate Grange Greathouse



The formal living room and an adjacent bedroom.

## An aerial photograph showing a rural landscape. In the foreground, there are several green agricultural fields, some with visible furrows. A black arrow points from the bottom center towards a specific area in the middle ground, which appears to be a mix of trees and fields. The background shows a dense line of trees and a small body of water, with a coastal town and the ocean visible in the distance.



For further information, please contact Rebecca Merwin, Trustee, M.K. Armstrong Trust, 340-514-1001.